

25/30/33L-9A 35LN-9A

LPG Counterbalance Trucks

MOVING YOU FURTHER

HYUNDAI CONSTRUCTION EQUIPMENT



■ Some of the photos may include optional equipment.

 **HYUNDAI**
CONSTRUCTION EQUIPMENT

PLEASE CONTACT

www.hyundai-ce.com

2017. 06 Rev. 0

 **HYUNDAI**
CONSTRUCTION EQUIPMENT

Your satisfaction is our priority!

Hyundai introduces a new line of 9-series LPG forklift trucks.

The newly designed 4 wheel counterbalance trucks provide every operator comfortable driving, increased productivity and easy maintenance.

New Diesel Forklift with Proven Quality and Advanced Technology

- Maximum performance
- Spacious operator's cab
- Switch type parking brake
- 5.6 inch LCD color monitor
- Truck inclination warning system
- OPSS System for safe operation (Optional)
- Easy serviceability
- Max speed limit function
- HAC(Hillstart-Assistance Control)
- Password starting system
- Auto fork leveling system (Optional)
- Load weight indicator (Optional)



High Efficiency & Optimal Performance

Powerful engine and high technology systems provide you with enhanced performance and highest productivity.

25/30/33L-9A
35LN-9A

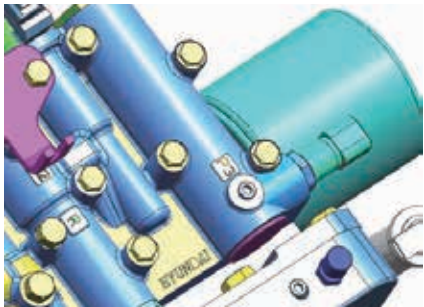


*Some of the photos may include optional equipment.



HMC L4KB(2.4L) Engine 60PS/2,300rpm

Powerful Engine - HMC L4KB(2.4L)
Market approved quality of HMC L4KB engine ensures incomparable performance, durability and additional value to the machine. Powerful and efficient engine provides excellent fuel consumption and excellent torque. (EPA/CARB Tier-IV Certified)



Clutch Protection System
The clutch protection system prevents excessive use of inching as well as minimizes change-impact.



Boosting Type Brake Valve (Optional)
The boosting type brake valve is applied for strong braking performance.



Highly Durable Drive Axle
The strengthened drive axle separable from transmission ensures low vibration and easy maintenance. The wet disc type brake is applied for easy operation, smooth response and maintenance free.



Fully Hydrostatic Power Steering
The hydraulic steering system always guarantees smooth and flexible steering, preventing over-run and kick-back.



Travel Speed (MAX)		Gradeability (MAX)	
Model	km / h	Model	%
25L-9A	18.5	25L-9A	40.7
30L-9A	20.0	30L-9A	31.9
33L-9A	19.9	33L-9A	28.3
35LN-9A	18.9	35LN-9A	28.6

Faster Travel Speed & Gradeability
The powerful high-output engine provides greater acceleration, better gradeability and faster travel speed on any tough terrain or slope.

Best Convenience & Optimized Ergonomics



The ergonomically designed cabin and the new style LCD color monitor provides full support and comfort to the operator.

25/30/33L-9A
35LN-9A



*Some of the photos may include optional equipment.

Spacious Operator Cabin

The newly designed cabin provides wide visibility and spacious environment, ensuring all day comfort for the operator.



Optimized Pedal Position

On the 9-series the pedals are mounted to the console to reduce operator fatigue, and noise and dust from the engine compartment.



Adjustable Steering Wheel

To achieve a comfortable drive position, the angle of the steering column can easily be adjusted by a lever on the right-hand side of the steering column.



fingertip

Ergonomically designed fingertip control levers eliminates reaches and awkward shoulder. It gives operators comfortability and efficiency.



Comfortable Grammer Seat

Easily adjustable suspension seat, based on a human engineering design, reduces operator fatigue and provides greater comfort.
*ELR (Energy Locking Retractor) Type Seat Belt
*Heating and Head-rest (OPT)

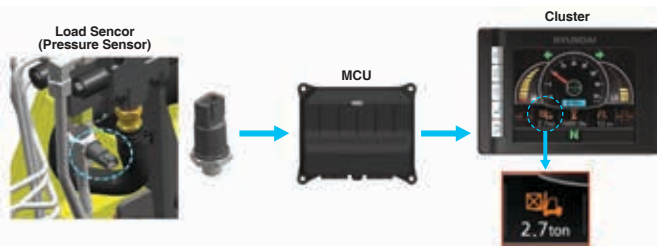
Advanced LCD Monitor

The 5.6 inch wide screen LCD color monitor allows the operator to control the machine with ease. The monitor features speed, travel direction, battery discharge indicator and hour meter.



Max Speed Limit System

- Safety function for the customer
- Maximum speed limit range : 8 km/h ~ 20 km/h (Selectable)
- Easy to set the function enabled and maximum speed value by the cluster
- Very smooth control (Travel speed reaches to the maximum speed smoothly)



Load Indicator (Optional)

The optional load indicator displays the load weight on the monitor. The load sensor reduces the time to check loaded weight and the alarm alerts the driver when overloaded.



Auto Fork Leveling System (Optional)

To improve the productivity the auto fork leveling system will automatically stop the tilt movement when the mast is in a straight position.

Advanced Safety



The safely designed driver's space makes your operating more comfortable.

25/30/33L-9A
35LN-9A



Excellent Visibility for Safe Operation

Optimized lift cylinder arrangement provides operator with wider visibility. The panoramic mirror expands the driver's view when backing up.

*Some of the photos may include optional equipment.



Strong Overhead Guard

Exceeding CEE and ANSI regulations, the overhead guard offers optimal protection combined with excellent all round visibility.



Low Entrance Height

The low entrance height ensures easy and safe access for the operator.



Steel Side Cover (Optional)

The strengthened steel side cover provides enhanced durability.



Rear Horn

Allowing operators hand to remain within forklift at all times for safety. An integral horn switch can prevent any hazardous situation at reverse mode.



HAC (Hill Start Assist Control System)

Anti-roll back the truck when the truck restart in the slope way.

Fork Safety Features

When the forks are being lowered, a down-control valve maintains the controlled speed. The down-safety valve prevents forks from dropping down in case of sudden damage of hydraulic line.

OPSS (Operator Presence Sensing System)

All mast and drive movements stop functioning when the operator is not in the seat.

Lift Lock Tilt Lock Drive Lock Parking



*Some of the photos may include optional equipment.



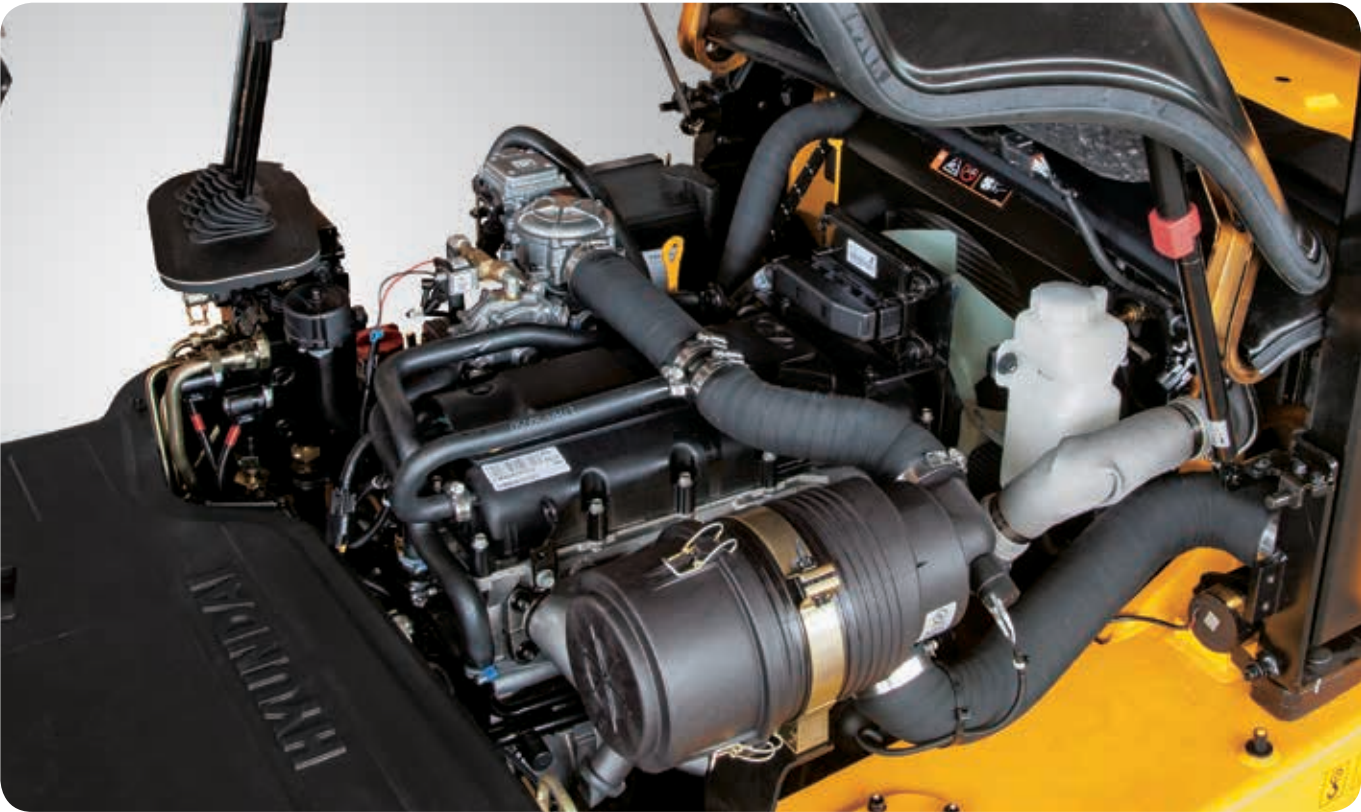
Safety Lamps & Rear Reflectors

Halogen headlights and rear LED combination lights offer the driver visibility in all circumstances. Rear reflectors mounted on the counterweight enhance safety for the driver and the application. *Full LED lamp are available.(Optional)

Fast and Easy Maintenance

An ideal arrangement of components ensures easy access and convenience for maintenance.

25/30/33L-9A
35LN-9A



Large Engine Hood

Highly accessible engine compartment assures fast and efficient maintenance. The enlarged air cleaner(7") has extended service time of engine.

*Some of the photos may include optional equipment.



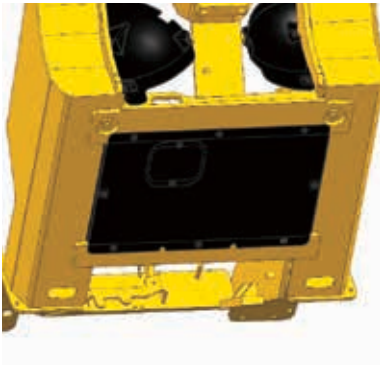
Waterproof & Dustproof Cover

Newly developed Waterproof and Dustproof fuse box and relay box for ease of maintenance.



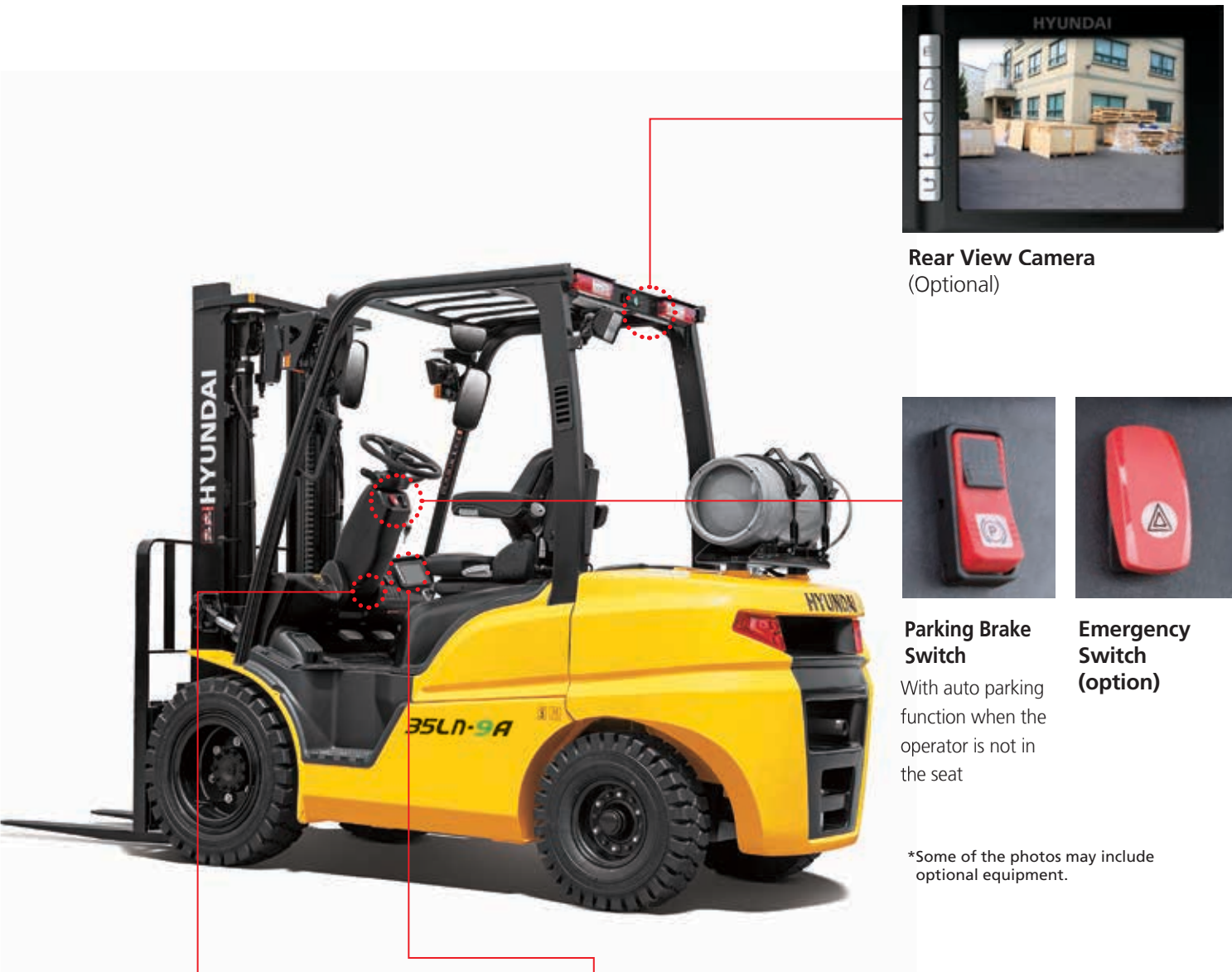
Rear Tire Cover (Optional)

The rear tire cover with PE material is well-suited to prevent clogging of the radiator from foreign substances.



Under Cover (Optional)

The Under cover protect the engine and components from dusts caused by ground. It helps to lengthen Components life.



Rear View Camera (Optional)



Parking Brake Switch

With auto parking function when the operator is not in the seat

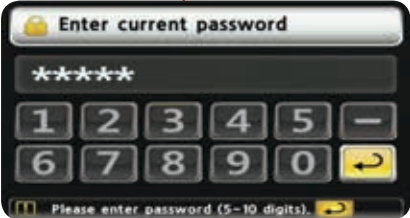


Emergency Switch (option)

*Some of the photos may include optional equipment.



Maintenance Management Display



Password Starting System (Anti-theft system)

New 9 Series

Mast Specification (25L-9A)

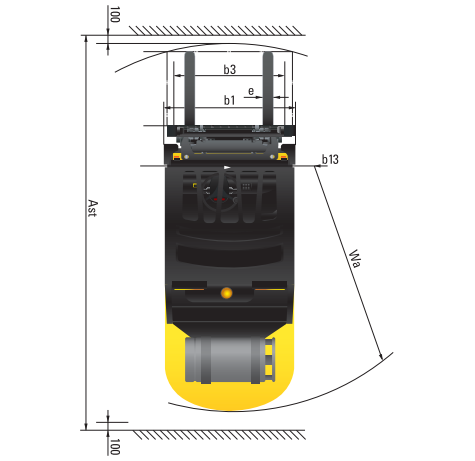
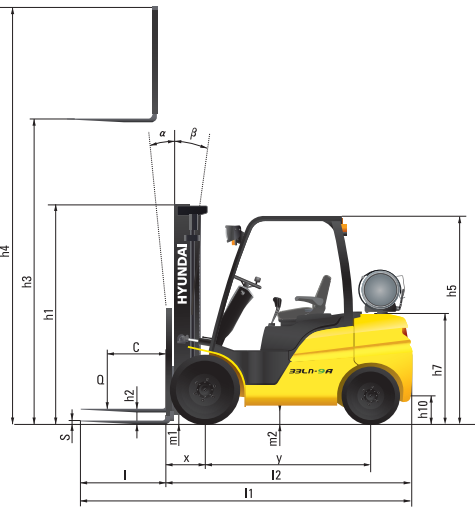
Mast Type		Maximum Fork Height		Overall Height (Lowered)		Free Lift Height				Tilt Angle	Load Capacity without side shift				Load Capacity with side shift				Truck Weight (Unloaded)			
						With Load Backrest		Without Load Backrest			Single Tire		Double Tire		Single Tire		Double Tire					
		in	mm	in	mm	in	mm	in	mm	deg	24 in LC	50mm LC	24 in LC	50mm LC	24 in LC	50mm LC	24 in LC	50mm LC	Single Tire	Double Tire	lb	kg
2- Stage Limited free lift	V300	118.3	3005	79.7	2025	4.5	155	4.5	155	6 / 10	5000	2500	5000	2500	5000	2500	5000	2500	8161	3702	8488	3850
	*V330	130.1	3305	85.6	2175	4.5	155	4.5	155	6 / 10	5000	2500	5000	2500	5000	2500	5000	2500	8203	3721	8532	3870
	V350	138.0	3505	89.6	2275	4.5	155	4.5	155	6 / 10	5000	2500	5000	2500	5000	2500	5000	2500	8241	3738	8569	3887
	V370	145.9	3705	95.5	2425	4.5	155	4.5	155	6 / 10	5000	2500	5000	2500	5000	2460	5000	2500	8267	3750	8598	3900
	V400	157.7	4005	101.4	2575	4.5	155	4.5	155	6 / 10	5000	2500	5000	2500	5000	2380	5000	2500	8355	3790	8684	3939
	V430	169.5	4305	107.3	2725	4.5	155	4.5	155	6 / 6	5000	2480	5000	2500	5000	2360	5000	2500	8470	3842	8799	3991
	V450	177.4	4505	113.2	2875	4.5	155	4.5	155	6 / 6	5000	2430	5000	2500	4870	2310	5000	2460	8519	3864	8847	4013
2- Stage full free lift	V470	185.2	4705	117.1	2975	4.5	155	4.5	155	6 / 6	4960	2390	5000	2500	4740	2270	5000	2380	8552	3879	8878	4027
	V500	197.0	5005	123.0	3125	4.5	155	4.5	155	6 / 6	4850	2330	5000	2430	4630	2210	5000	2310	8600	3901	8926	4049
	VF295 / VS295	117.2	2976	79.7	2025	33.3	845	54.2	1377	6 / 6	5000	2500	5000	2500	5000	2500	5000	2500	8205	3722	8543	3875
3- Stage full free lift	VF325 / VS325	129.0	3276	85.1	2175	38.7	995	60.2	1527	6 / 6	5000	2500	5000	2500	5000	2460	5000	2500	8278	3755	8618	3909
	VF345 / VS345	136.9	3476	89.6	2275	43.1	1095	64.1	1627	6 / 6	5000	2500	5000	2500	5000	2380	5000	2460	8331	3779	8688	3941
	TF370/TS370	145.9	3705	71.9	1825	25.4	645	46.3	1177	6 / 6	5000	2500	5000	2500	5000	2460	5000	2500	8404	3812	8743	3966
	TF400/TS400	157.7	4005	75.8	1925	29.3	745	50.3	1277	6 / 6	5000	2500	5000	2500	5000	2380	5000	2500	8457	3836	8796	3990
	TF430/TS430	169.5	4305	79.7	2025	33.3	845	54.2	1377	6 / 6	5000	2440	5000	2500	5000	2320	5000	2460	8496	3854	8836	4008
	TF450/TS450	177.4	4505	83.7	2125	37.2	945	58.1	1477	6 / 6	5000	2410	5000	2500	4850	2290	5000	2380	8545	3876	8884	4030
	TF470/TS470	185.2	4705	85.6	2175	39.2	995	60.1	1527	6 / 6	4920	2360	5000	2450	4700	2240	4860	2330	8576	3890	8913	4043
	TF500/TS500	197.0	5005	89.6	2275	43.1	1095	64.1	1627	6 / 6	4810	2310	4940	2400	4590	2190	4720	2280	8624	3912	8962	4065
	TF550/TS550	216.7	5505	97.4	2475	51.0	1295	71.9	1827	6 / 6	3240	1550	4780	2310	3020	1430	4560	2190	8710	3951	9048	4104
	TF600/TS600	236.4	6005	105.3	2675	58.9	1495	79.8	2027	6 / 6	2930	1400	4590	2210	2710	1280	4370	2090	8854	4016	9191	4169
4- Stage full free lift	TF650/TS650	256.1	6505	113.2	2875	66.7	1695	87.7	2227	3 / 3	2840	1350	4540	2180	2620	1230	4320	2060	8955	4062	9295	4216
	TF700/TS700	275.8	7005	121.1	3075	74.6	1895	95.6	2427	3 / 3	2430	1150	4370	2100	2210	930	4150	1980	9039	4100	9378	4254
	QF610	240.7	6115	85.0	2160	38.6	980	59.5	1512	3 / 3	3200	1600	3400	1700	2960	1480	3160	1580	9387	4258	9771	4432
	QF660	260.4	6615	92.9	2360	46.5	1180	67.4	1712	3 / 3	2800	1400	3200	1600	2560	1280	2960	1480	9519	4318	9901	4491
	QF700	276.2	7015	96.9	2460	50.4	1280	71.3	1812	3 / 3	2200	1100	3000	1500	1960	980	2760	1380	9586	4348	9969	4522
	QF745	293.9	7465	102.8	2610	56.3	1430	77.2	1962	3 / 3	1600	800	2800	1400	1360	680	2560	1280	9687	4394	10071	4568
	QF790	311.6	7915	108.7	2760	62.2	1580	83.1	2112	3 / 3	1200	600	2400	1200	960	480	2160	1080	9907	4494	10291	4668

Mast Specification (30L-9A)

Mast Type		Maximum Fork Height		Overall Height (Lowered)		Free Lift Height				Tilt Angle	Load Capacity without side shift				Load Capacity with side shift				Truck Weight (Unloaded)			
						With Load Backrest		Without Load Backrest			Single Tire		Double Tire		Single Tire		Double Tire					
		in	mm	in	mm	in	mm	in	mm	deg	24 in LC	50mm LC	24 in LC	50mm LC	24 in LC	50mm LC	24 in LC	50mm LC	Single Tire	Double Tire	lb	kg
2- Stage Limited free lift	V300	118.3	3005	80.3	2040	4.5	155	4.5	155	6 / 10	6000	3000	6000	3000	6000	3000	6000	3000	9030	4096	9303	4220
	*V330	130.1	3305	86.2	2190	4.5	155	4.5	155	6 / 10	6000	3000	6000	3000	6000	3000	6000	3000	9074	4116	9347	4240
	V350	138.0	3505	90.2	2290	4.5	155	4.5	155	6 / 10	6000	3000	6000	3000	6000	3000	6000	3000	9114	4134	9387	4258
	V370	145.9	3705	96.1	2440	4.5	155	4.5	155	6 / 10	6000	3000	6000	3000	6000	2930	6000	3000	9142	4147	9416	4271
	V400	157.7	4005	102.0	2590	4.5	155	4.5	155	6 / 10	6000	3000	6000	3000	6000	2820	6000	3000	9231	4187	9506	4312
	V430	169.5	4305	107.9	2740	4.5	155	4.5	155	6 / 6	6000	2960	6000	3000	6000	2780	6000	2950	9347	4240	9621	4364
	V450	177.4	4505	113.8	2890	4.5	155	4.5	155	6 / 6	6000	2920	6000	3000	5800	2740	6000	2825	9398	4263	9672	4387
2- Stage full free lift	V470	185.2	4705	117.7	2990	4.5	155	4.5	155	6 / 6	5910	2850	6000	2930	5610	2670	5830	2755	9431	4278	9705	4402
	V500	197.0	5005	123.6	3140	4.5	155	4.5	155	6 / 6	5820	2650	5970	2890	5520	2470	5670	2715	9482	4301	9755	4425
3- Stage full free lift	VF295 / VS295	117.2	2976	80.3	2040	33.9	860	51.7	1314	6 / 6	6000	3000	6000	3000	6000	3000	6000	3000	9173	4161	9444	4284
	VF325 / VS325	129.0	3276	85.1	2190	38.7	1010	60.2	1464	6 / 6	6000	3000	6000	3000	6000	2950	6000	3000	9250	4196	9522	4319
	VF345 / VS345	136.9	3476	90.2	2290	43.7	1110	61.6	1564	6 / 6	6000	3000	6000	3000	6000	2820	6000	2950	9328	4231	9599	4354
	TF370/TS370	145.9	3705	72.4	1840	26.0	660	43.9	1114	6 / 6	6000	3000	6000	3000	6000	2820	6000	3000	9414	4270	9685	4393
	TF400/TS400	157.7	4005	76.4	1940	29.9	760	47.8	1214	6 / 6	6000	3000	6000	3000	6000	2800	6000	2950	9469	4295	9738	4417
	TF430/TS430	169.5	4305	80.3	2040	33.9	860	51.7	1314	6 / 6	6000	2930	6000	3000	5810	2750	6000	2825	9517	4317	9786	4439
	TF450/TS450	177.4	4505	84.3	2140	37.8	960	55.7	1414	6 / 6	5930	2880	6000	2940	5630	2700	5830	2765	9572	4342	9843	4465
	TF470/TS470	185.2	4705	86.2	2190	39.8	1010	57.6	1464	6 / 6	5890	2850	5970	2900	5590	2670	5670	2725	9603	4356	9874	4479
	TF500/TS500	197.0	5005	90.2	2290	43.7	1110	61.6	1564	6 / 6	5730	2700	5840	2840	5430	2520	5540	2665	9654	4379	9923	4501
	TF550/TS550	216.7	5505	98.0	2490	51.6	1310	69.4	1764	6 / 6	3660	1750	5640	2720	3360	1570	5340	2545	9751	4423	10020	4545
4- Stage full free lift	TF600/TS600	236.4	6005	105.9	2690	59.4	1510	77.3	1964	6 / 6	3020	1450	5450	2630	2720	1270	5150	2455	9905	4493	10174	4615
	TF650/TS650	256.1	6505	113.8	2890	67.3	1710	85.2	2164	3 / 3	2930	1400	5380	2590	2630	1220	5080	2415	10018	4544	10287	4666
	TF700/TS700	275.8	7005	121.7	3090	75.2	1910	93.1	2364	3 / 3	2540	1200	5200	2500	2240	1020	4900	2325	10112	4587	10384	4710
	QF610	240.7	6115	85.6	2175	39.2	995	57.0	1449	3 / 3	3400	1700	3600	1800	3040	1520	3240	1620	10317	4680	10628	4821
4- Stage full free lift	QF660	260.4	6615	93.5	2375	47.0	1195	64.9	1649	3 / 3	3000	1500	3400	1700	2640	1320	3040	1520	10450	4740	10761	4881
	QF700	276.2	7015	97.4	2475	51.0	1295	68.9	1749	3 / 3	2400	1200	3200	1600	2040	1020	2840	1420	10516	4770	10827	4911
	QF745	293.9	7465	103.3	2625	56.9	1445	74.8	1899	3 / 3	1800	900	3000	1500	1440	720	2640	1320	10617	4816	10928	4957
	QF790	311.6	7915	109.3	2775	62.8	1595	80.7	2049	3 / 3	1400	700	2600	1300	1040	520	2240	1120	10838	4916	11151	5058

New 9 Series

Dimension

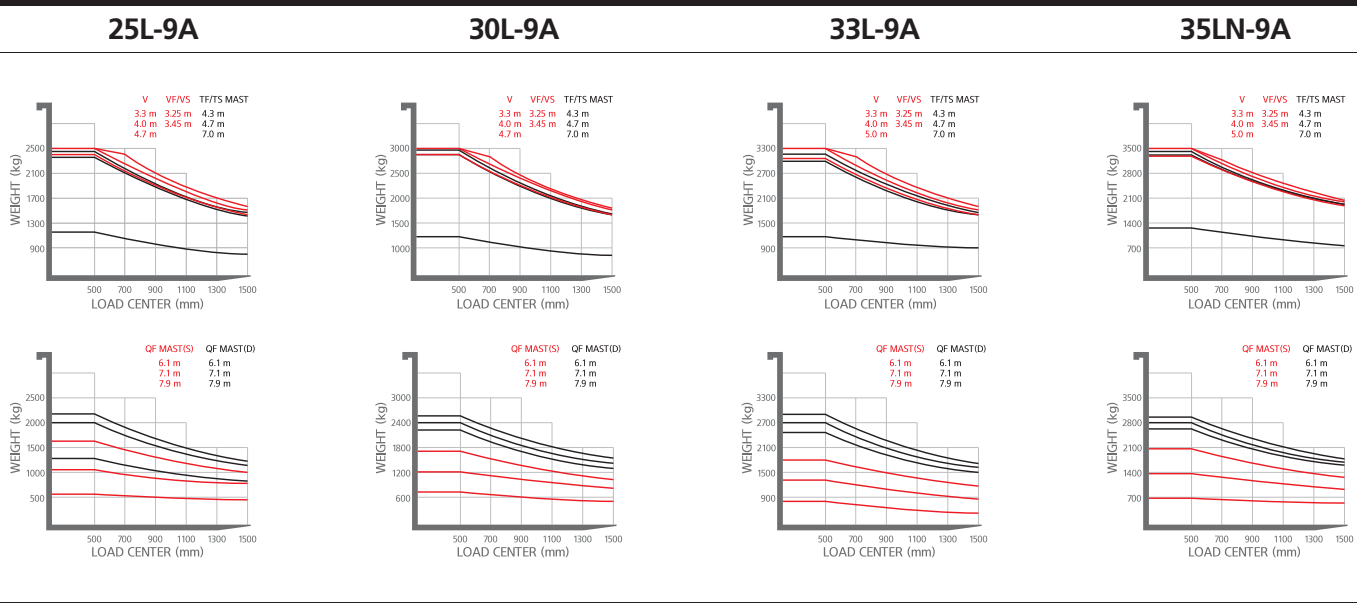


Specification

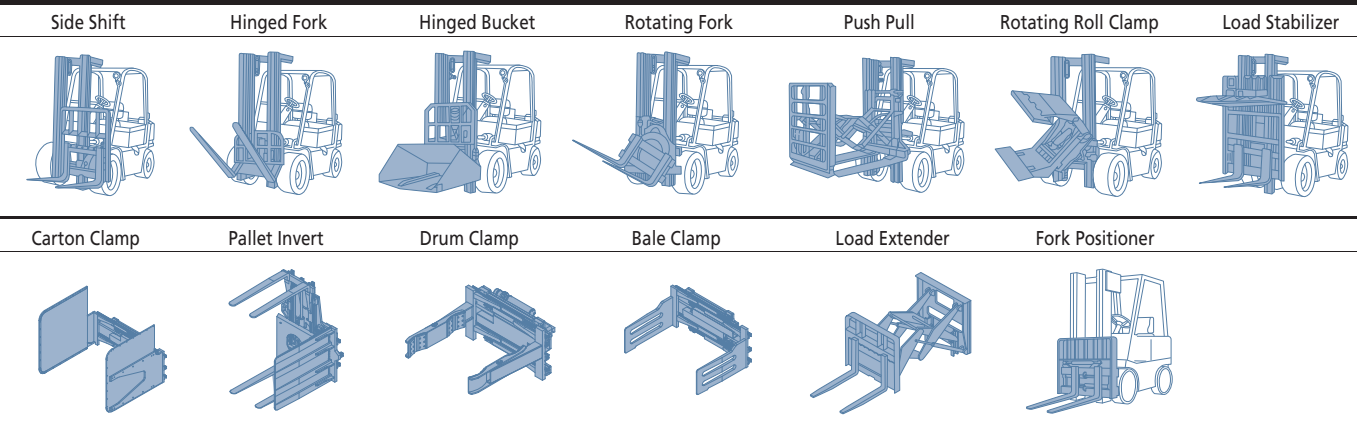
Identification					
1.1	Manufacturer		Hyundai	Hyundai	Hyundai
1.2	Manufacturer's model designation		25L-9A	30L-9A	33L-9A
1.3	Drive: electric (battery or mains),diesel,petrol,fuel gas>manual		LPG	LPG	LPG
1.4	Type of operation:hand,pedestrian,standing,seated,order-picker		seated	seated	seated
1.5	Load capacity / Rated load	kg	2500	3000	3300
1.6	Load center distance	c mm	500	500	500
1.8	Load distance, center of drive axle to fork	x mm	468	468	468
1.9	Wheelbase	y mm	1650	1700	1700
Weights					
2.1	Service weight	kg	3721	4116	4395
2.2	Axle loading, loaded front / rear	kg	5567 / 822	6375 / 906	6807 / 1054
2.3	Axle loading, unloaded front / rear	kg	1600 / 2288	1667 / 2615	1628 / 2933
1449 / 3085					
Wheels, Chassis					
3.1	Tires : Pneumatic(P), Solid(S), Non-marking(N)		P	P	P
3.2	Tires size, front	Single	7.00 - 12 - 14PR	28X9 - 15 - 14PR	28X9 - 15 - 14PR
		Double	6.00 - 15 - 10PR	6.00 - 10 - 10PR	6.00 - 10 - 10PR
3.3	Tires size, rear	Single	6.50 - 10 - 14PR	6.50 - 10 - 14PR	6.50 - 10 - 14PR
		Double	6.50 - 10 - 12PR	6.50 - 10 - 12PR	6.50 - 10 - 12PR
3.4	Number of wheels front / rear (x=driven wheels)		2x / 2	2x / 2	2x / 2
3.5	Tires width, front	Single	mm	999	1005
		Double	mm	1153	1153
	Tires width, rear		mm	980	980
Basic Dimensions					
4.1	Mast / fork carriage tilt forward / backward (α / β)	degrees	6 / 10	6 / 10	6 / 10
4.2	Lowered mast height	h1 (mm)	2175	2190	2260
4.3	Free lift	h2 (mm)	155	155	155
4.4	Lift height	h3 (mm)	3305	3305	3305
4.5	Extended mast height	h4 (mm)	4485	4485	4485
4.7	Overhead guard height (cabin)	h5 (mm)	2160 (2170)	2180 (2190)	2180 (2190)
4.8	Seat height / standing height rel. to SIP	h7 (mm)	1187	1212	1212
4.12	Coupling height	h10 (mm)	295	320	320
4.19	Overall length	l1 (mm)	3657	3726	3782
4.20	Length to face of forks	l2 (mm)	2607	2676	2732
4.21	Overall width	Single	b1 (mm)	1200	1228
		Double	b1 (mm)	1517	1517
4.22	Fork dimensions(hook type)	l / e / s (mm)	1050 x 100 x 45	1050 x 122 x 45	1050 x 122 x 45
4.23	Fork carriage ISO 2328, class / type A,B		2A	3A	3A
4.24	Fork-carriage width	b3 (mm)	1102	1102	1102
4.31	Ground clearance, loaded, under mast	m1 (mm)	130	145	145
4.32	Ground clearance, centre of wheelbase	m2 (mm)	157	181	171
4.33	Aisle width for pallets 1,000x1,200 crossways (LxW)	Ast (mm)	4010	4081	4131
4.34	Aisle width for pallets 800x1,200 lengthways (WxL)	Ast (mm)	4210	4281	4331
4.35	Turning radius	Wa (mm)	2342	2413	2463
4.36	Smallest pivot point distance	b13 (mm)	714	731	731
Performance Data					
5.1	Travel speed, unloaded	km/h	18.5	20.0	19.9
5.2	Lift speed, loaded/ unloaded	mm/s	580 / 590	570 / 590	460 / 480
5.3	Lowering speed, loaded/unloaded	mm/s	500 / 450	500 / 450	500 / 450
5.5	Drawbar pull, loaded	kg	2686	2437	2443
5.7	Gradient performance, loaded	%	40.7	31.9	28.3
5.9	Acceleration time, loaded/ unloaded(10m)	sec	-	-	-
5.10	Service brake		FOOT	FOOT	FOOT
Engine					
6.1	Engine manufacturer / type		HMC/L4KB	HMC/L4KB	HMC/L4KB
6.2	Engine power acc. to ISO 1585	kW/rpm	44.1 / 2300	44.1 / 2300	44.1 / 2300
6.3	Maximum Torque	kgf.m/rpm	19 / 1800	19 / 1800	19 / 1800
6.4	No. of cylinder / cubic capacity	EA/cc	4 / 2359	4 / 2359	4 / 2359
6.5	Fuel consumption acc. To VDI cycle	ℓ/h	-	-	-
Other Details					
8.1	Type of drive control		PowerShift	PowerShift	PowerShift
8.2	Operating pressure, system / attach	bar	196 / 162	206 / 162	216 / 162
8.3	Oil volume (hydraulic)	ℓ	30(60 Max.)	30(60 Max.)	30(60 Max.)
8.4	Sound pressure level (at driver's ear according to DIN 12053)	dB(A)	80	80	80
8.5	Trailer coupling, type DIN		PIN	PIN	PIN

25/30/33L-9A
35LN-9A

Load Capacity



Various Attachments



Optional Items

- Fork(mm)
25L-9A : 900, 1000, 1050(STD), 1200, 1350, 1500, 1650, 1800, 2100
30/33L-9A, 35LN-9A : 900, 1050(STD), 1150, 1200, 1650, 1800, 1970, 2120, 2300, 2400
- Overshoe(mm)
25L-9A : 1300, 1500, 1700, 1800
30/33L-9A, 35LN-9A : 1300, 1500, 1700, 1800
- Integral Sideshift, Fork Positioner, Sideshift, Integral Fork Positioner with Sideshift
- Tire : Solid(superelastic) / Non-marking / Front double tire
- M.C.V : 4-Spool
- Seat : Armrest, Heat, Backrest Ext, Buckle SW
- Load Weight Indicator
- Auto Fork Leveling System
- Rear View Camera
- Cabin(Heater, A/C)
- Hydraulic Pump Temperature / Pressure Indication
- Battery Disconnect Switch(Master Switch)
- Beacon Lamp(LED) (Amber, Red, Blue)
- Rear work Lamp(Bulb or LED)
- F-N-R & Horn Knob switch
- Rear Horn with Handle
- Finger Tip Control Lever
- Full LED Lamp
- Cooling system for Tropical Area(35LN-9A)